

ABOUT COMPANY



COMPANY

osmo[®]
...ve tvůrčí a inovativní

Naši zákazníci se spoléhají na naši práci. A to mohou!

Na každé plechovce Osmo je napsáno, co je uvnitř. Například, když je na ni vytištěno "bezpečné pro potraviny", pak je výrobek právě takový: bezpečný pro potraviny. Pozdější kontakt s ovocem, zeleninou apod. je naprosto bezpečný. Žádné kdyby, a nebo ale: na Osmo se mohou zcela spolehnout. A proto se na naši práci mohou spolehnout i naši zákazníci.

A Vy můžete také!



COMPANY INTRODUCTION

AU-MEX s.r.o. **was founded in 1997** as a commercial company with a wide range of wooden products.

Our company supplies its customers worldwide with wooden products such as **terraces, facades, solid and multilayered floors, sauna profiles and plywood** from our own sources and reliable manufacturers/partners in South America, Malaysia, Indonesia, Myanmar, Canada and Russia.

We have **25 years of market experience** and are the leading wooden product distributor in Central Europe.

Thanks to strong partnerships with more than 100 sawmills spread across Brazil and other South American countries, Malaysia, Indonesia, Myanmar, Russia and the Czech Republic, our company maintains a **stock of more than 30,000 m³** of renewable wood available to our customers.

The 25-years of evolution



- 1996 ● Establitation of the company
- 2008 ● Finishing of building our current headquarters in Prague. (15 000 m²)
- 2009 ● Ekowood / AU-MEX cooperation. Exclusive distribution throughout Europe. (Multilayer flooring)
- 2010 ● Start imports from Brazil and other South American countries, Malaysia, Indonesia, Myanmar, Russia and the Czech Republic.
- 2012 ● Establishment of AU-MEX subsidiaries in Brazil, Malaysia, Indonesia, Myanmar, Russia and the Czech Republic.
- 2013 ● Supplying materials to the whole of Europe.
- 2016 ● Supplying materials worldwide.
- 2020 ● Expansion of warehouse space by 200 pallet places.
- 2022 ● 25 years on the market, and we still strive to create the best experience with us.
- FUTURE ● We hope that we can create a future with you. Thank you for being so supportive.

LOCATION

The Czech Republic is a country with amazing nature.

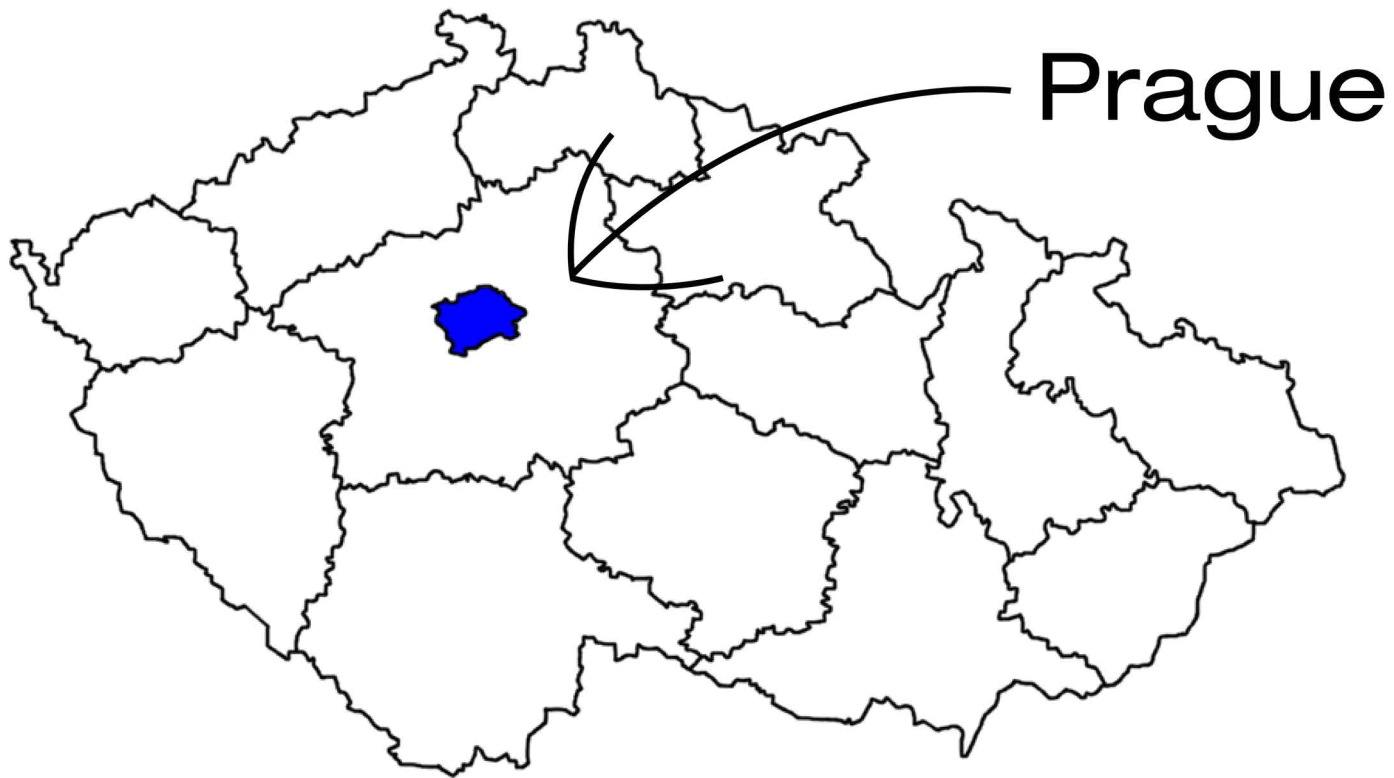
Up to 34% of the country is covered by forests, making it an ideal place for our business.



Prague is the capital of the Czech Republic.

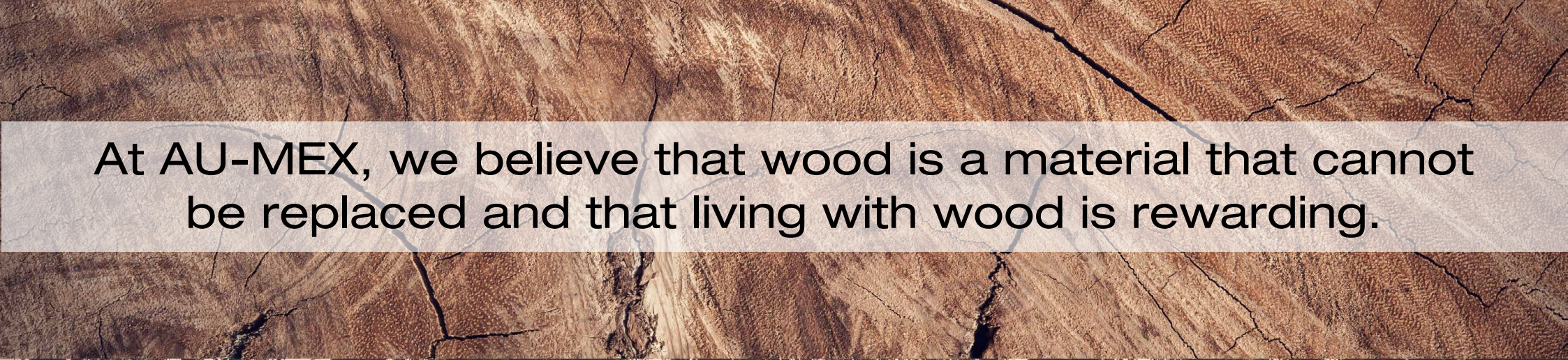
Located in the heart of Europe, it offers easy and fast transport links to the rest of Europe.

It is a historic city with many monuments and vibrant and varied history.



Prague





At AU-MEX, we believe that wood is a material that cannot be replaced and that living with wood is rewarding.



We only work with suppliers who are committed to sustainable forest management.



Wood is a material that never loses its beauty and appearance.

EXPORT ALL OVER THE WORLD



Real **DECK®**

Real **FACADE®**

Real **SAUNA
PROFILES®**

Real **FLOOR®**

eKO WOOD®
A stylish way to live...



IPE



TEAK



GARAPA



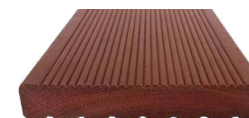
MERBAU



DARK RED MERANTI



MASSARANDUBA



BANGKIRAI



WESTERN RED CEDAR



THERMOWOOD ASH



THERMOWOOD PINE



SIBERIAN LARCH



EUROPEAN LARCH



**PRESSURE
IMPREGNATED PINE**





OAK



TEAK



MERBAU



ASH



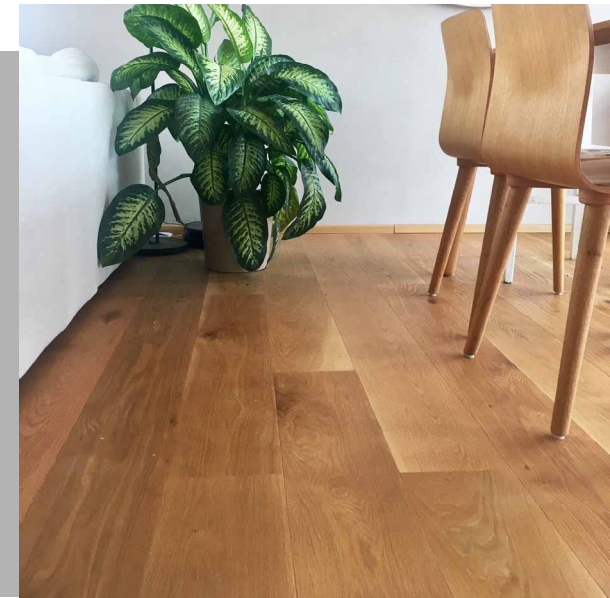
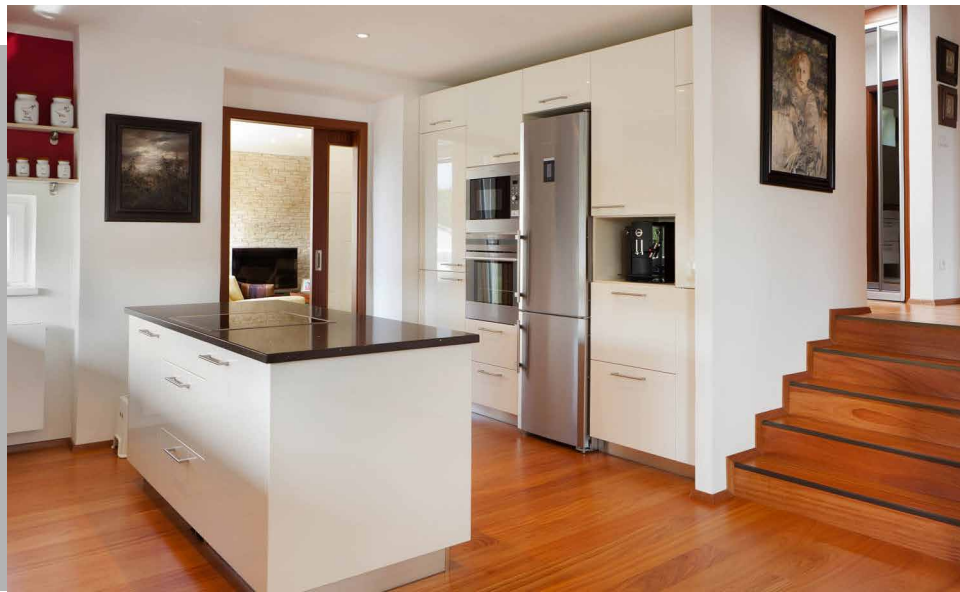
LARCH



PINE



SPRUCE





DARK RED MERANTI



WESTERN RED CEDAR



THERMOWOOD PINE



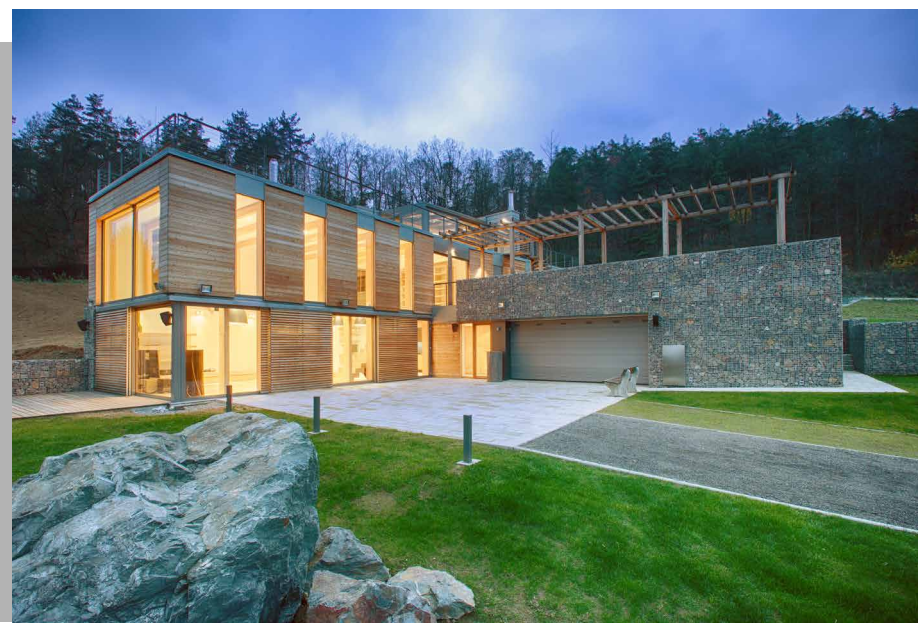
SIBERIAN LARCH



EUROPEAN LARCH



NORTHERN SPRUCE





BIRCH - FILM/WIRE PLYWOOD/EXTERIOR/INTERIOR



POPLAR - FILM/WIRE PLYWOOD



ELLIOTIS PINE PLYWOOD



eKO WOOD®

A stylish way to live...

Design:

- Collection - Oak and Ash
- Collection - exotic wood
- Fine Season Collection – finely woven strips
- 3 different gradings

Modern technology – lock 5G

Extremely fast, reliable and clean installation.

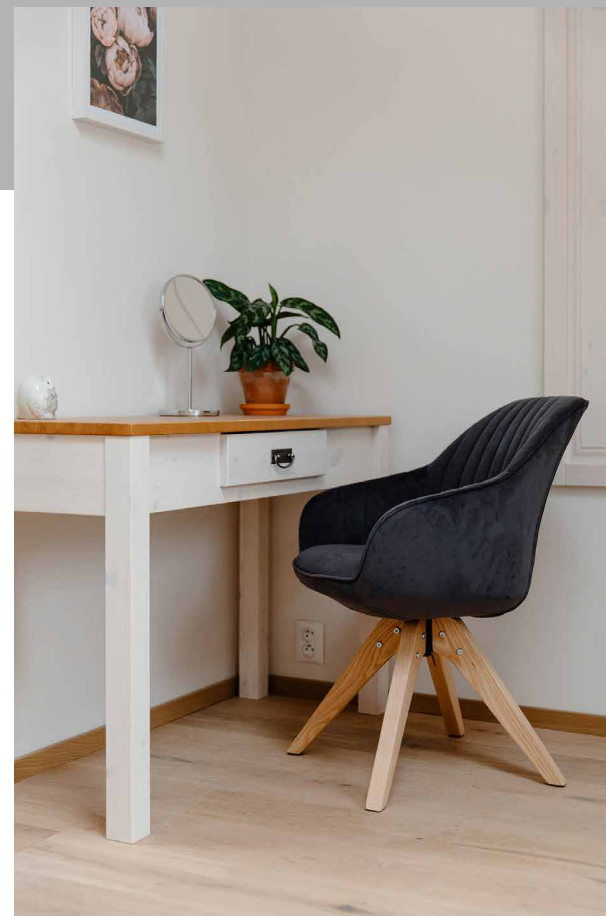
Original skirting in the shade of the floor:

Original skirting 19x40x2400 mm and 13x50x2400 mm including solid wood threshold profiles.

OSMO UV Polyx-Oil finish:

Surface treatment based on natural oils and waxes keeps the wood natural and perfectly protected.

Middle layer made from Hevea
The floor support layer is made from hard and stable wood.

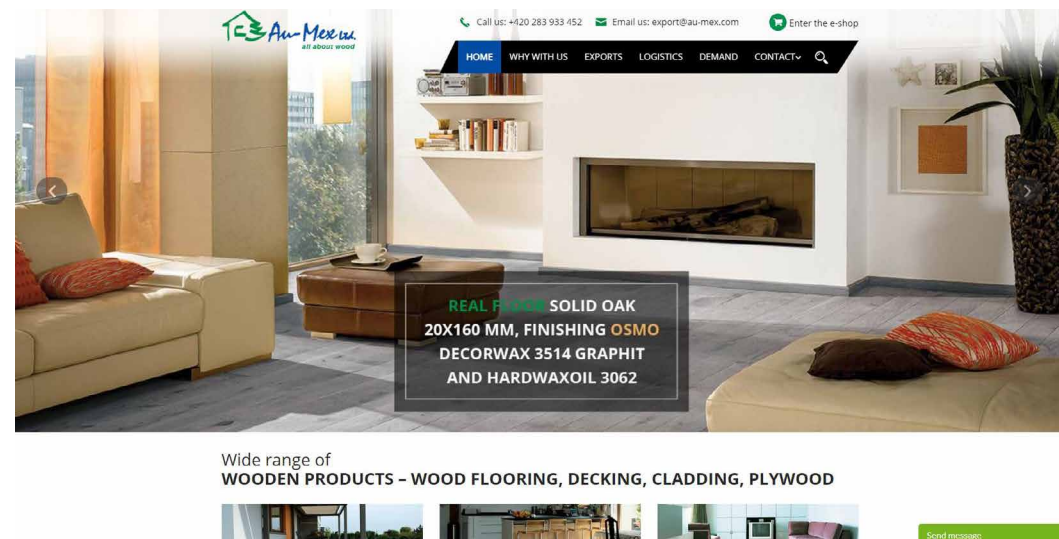


CONTACT

Au-Mex Ltd.,
Podebradska 574/40,
190 00 Prague 9 - Vysocany,
Czech Republic

☎ +420 283 933 452
+420 608 052 451
✉ export@au-mex.com

Skype: petr.hanzal12
Whatsapp: +420 608 052 451



On our website
www.au-mex.com
you will find a detailed
overview of our product
range and eshop.